



# AQUINITY<sup>2</sup> & ASTACUS<sup>2</sup>

INNOVATIVE ULTRA PURE  
WATER SYSTEMS



The new ultra pure water systems **Aquinity<sup>2</sup>** and **Astacus<sup>2</sup>** provide you with reliable and compact systems which produce ASTM Type I grade water. The **Aquinity<sup>2</sup>** is fed directly from (tap) municipal or potable water whereas **Astacus<sup>2</sup>** needs de-ionized water. Both systems ensure high comfort at low operating costs.

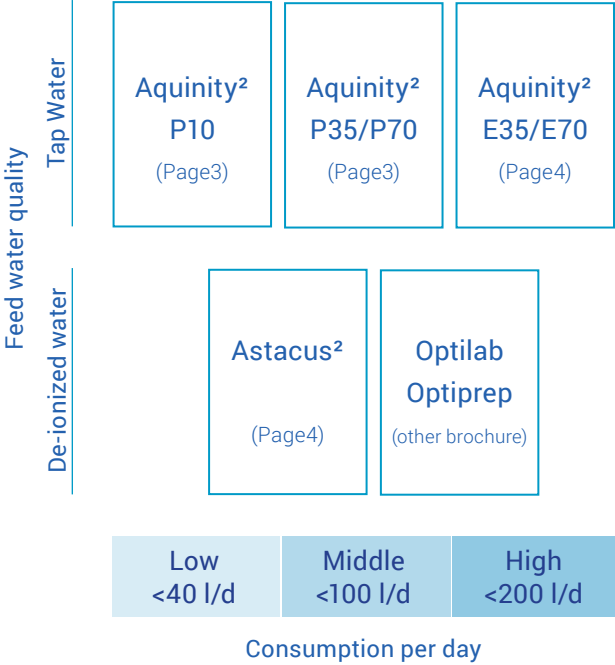
**Aquinity<sup>2</sup>** systems are equipped with a reverse osmosis (RO) or additional an electro deionization (EDI) cell to produce de-ionized water. The systems are equipped with 10 l, 35 l or 70 l storage reservoirs which are filled with a production rate of 10 l/h. The de-ionized water can be dispensed straight from this reservoir. In the next step the ultra pure water is produced with a combination of optimized cartridges with activated carbon and mixed bed. As an additional option the new **Aquinity<sup>2</sup>** and **Astacus<sup>2</sup>** models enable remote diagnosis and service via Internet. This Remote Check offers you the opportunity to save time and money by fast and reliable support through the service team.

# RANGE OF SYSTEMS

This product guide shows the range of our ultra pure water systems and will help to select the best system for your needs.

## Advantages of the new systems

- Compact housing
- Big touchscreen
- Remote Service module
- Menus and wizards easy to use and mistake avoiding
- New fixed an flexible dispenser
- Easy access for cartridge exchange



## Aquinity<sup>2</sup> P10

**Aquinity<sup>2</sup>** models produce ultra pure water directly from municipal or potable tap water. The **Aquinity<sup>2</sup> P10** is equipped with a reverse osmosis (RO) to produce deionized water directly into an integrated 10 l tank. In the next step Type I water is produced with a polisher cartridge. The model **Aquinity<sup>2</sup> P10** is ideal for laboratories with a lower daily need of ultra pure water.

Permeate rate	8 l/h
Resistivity	18.2 MΩm x cm
Reservoir	10 l
Flow Rate UPW	1.5 l/min
TOC	< 10 ppb (Reagent) < 1 ppb (Analytical with UV)

## Aquinity<sup>2</sup> P35 / P70

**Aquinity<sup>2</sup> P35/P70** versions have an independent tank from where RO water can be tapped (e.g. for glass ware cleaning). The water quality from this tank depends on the feed water quality; in general the RO holds back 98% of all ions. The tank can be installed at the side, above the system or even underneath the bench. Tapping of ultra pure water is done with our fixed and flexible dispenser as in all membraPure UPW systems. With the **Aquinity<sup>2</sup> P35/P70** versions also a TOC monitoring is available. **Aquinity<sup>2</sup> P35/P70** is the perfect system for a midsize lab.

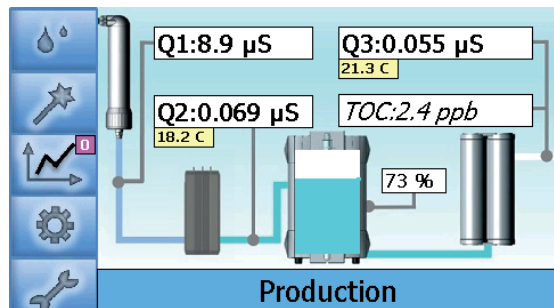
Permeate rate	10 l/h
Resistivity	18.2 MΩm x cm
Reservoir	35 l or 70 l
Flow Rate UPW	2 l/min
TOC	< 10 ppb (Reagent), 5 ppb (Aquinity <sup>2</sup> E) < 1 ppb (Analytical with UV) < 5 ppb (LifeScience with UV and UF)
Endotoxins:	< 0.001 EU/ml endotoxins (LifeScience)



## Aquinity<sup>2</sup> E35 / E70

**Aquinity<sup>2</sup> E35/E70** systems contain an additional electro deionization (EDI) cell to produce Type II water with a production rate of 10 l/h. The systems are equipped with 35 l or 70 l storage reservoirs. The water can be dispensed directly from the reservoir. In **Aquinity<sup>2</sup> E35/E70** models the water from the reservoir has a very high quality of  $<0.1 \mu\text{S}/\text{cm}$  and can be therefore be used for less sensitive applications. Also this high water quality prevents the polisher cartridge to be exhausted quickly. So for all labs which use more than 100l/day the **Aquinity<sup>2</sup> E35/E70** is also an economical and ecological (less waste) wise decision.

All Aquinity models are available in different versions (Reagent, Analytical & LifeScience)



main screen  
Aquinity<sup>2</sup> E

## Astacus<sup>2</sup>

To produce ultra pure water **Astacus<sup>2</sup>** systems are fed with de-ionized water. **Astacus<sup>2</sup>** models are designed for a daily consumption of less than 100 l and are equipped with a MemPak purification cartridge. **Astacus<sup>2</sup>** is available in different versions (Reagent, Analytical & LifeScience) to meet the specific requirements of ultra pure water for different applications. The systems also have the new fixed and flexible dispenser and a big touchscreen with easy to use menus and wizards.

Resistivity	18.2M $\Omega$ cm x cm
Flow Rate	UPW 2 l/min
TOC	< 10 ppb (Reagent) < 1 ppb (Analytical with UV) < 5 ppb (LifeScience with UV and UF)
Endotoxins:	< 0.001 EU/ml endotoxins (LifeScience)



# OPTIONS

## µS-Control

(only for Astacus<sup>2</sup>)

The **µS-Control** checks the conductivity of feed water to protect the cartridges against feed water of poor quality. If conductivity of the feed water is too high this water will be rejected and cannot influence the quality of the ultrapure water. The capacity of the cartridges is thereby used optimally.

## TOC monitoring

(only for **Astacus<sup>2</sup>** & **Aquinity<sup>2</sup> P/E 35/70**)

The TOC monitoring during production and intermittent measurements during non-use periods allows to check the organics in water continuously. The TOC value is measured between 1 and 30 ppb and can be shown in the display to monitor organic impurities.

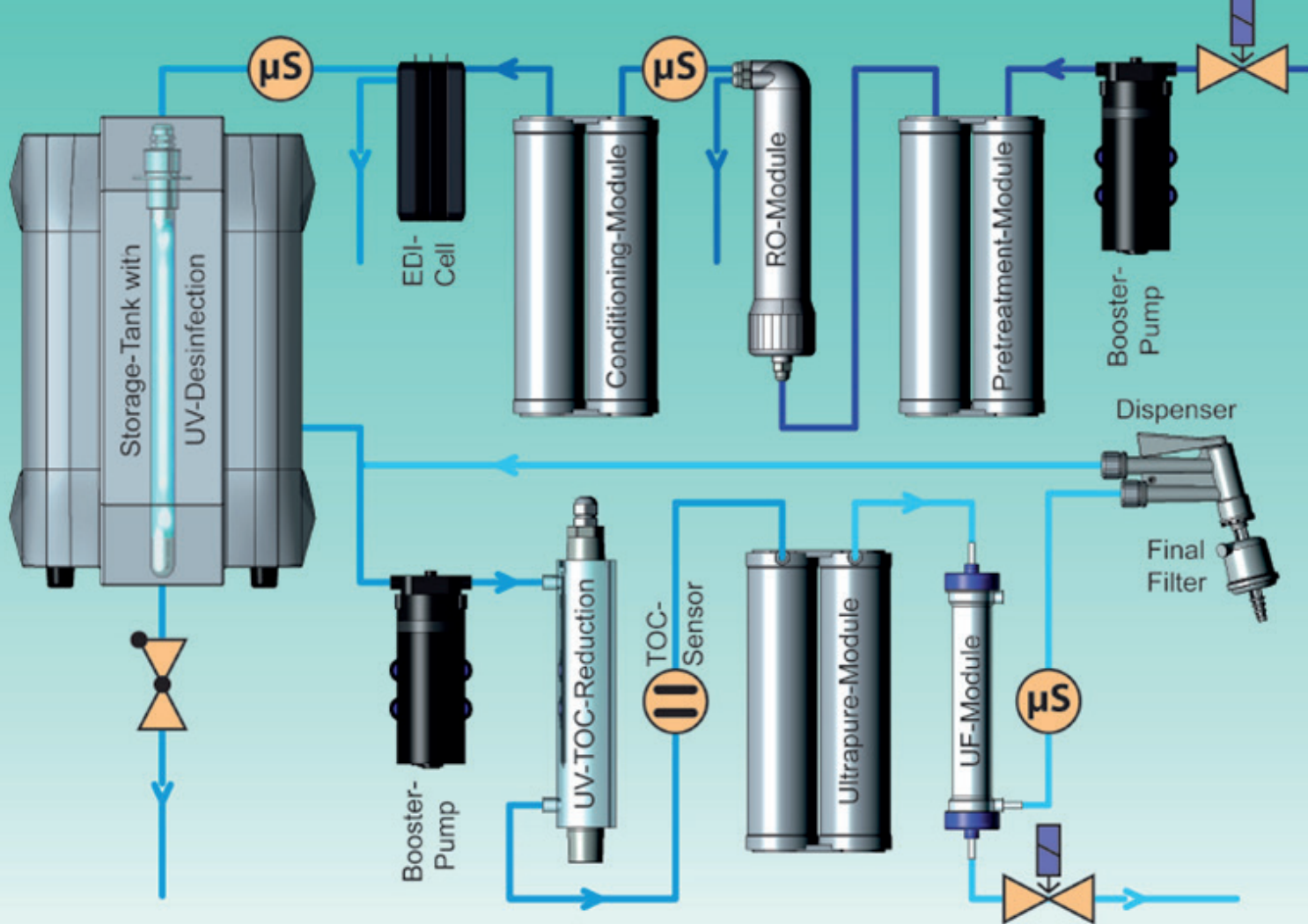
## Upgrade for Trace Analysis

To detect traces of substances in analytics, the water quality has to be of highest purity. Therefore all components are made of unfilled material. Tubing material is PTFE for minimal adhesion. Dead spaces are avoided and the recirculation pump is made of PEEK and stainless steel. The material of the tap valve is PVDF.

## memTap

Our new automatic memTap allows the volumetric controlled tapping of water with a dispenser arm. The arm can be moved horizontally and vertically. Preset of tap-volume is in 0.1 l steps. This system prevents overflow of containers and allows to tap water without supervising. The 3,5" display with touch screen offers you all relevant data at a glance.







membraPure GmbH  
Wolfgang-Kuentscher-Str. 14, 16761 Hennigsdorf/Berlin, Germany  
+49 3302 - 201 20 0 [info@membraPure.de](mailto:info@membraPure.de) [www.membraPure.de](http://www.membraPure.de)

Managing director: Emil Flindt / Registration office: Neuruppin district court / Trade register: HRB 9604NP  
WEEE-Reg.-Nr. DE 14696925 / VAT-ID number according to § 27a German VAT law: DE 160260388